



Bridge Farm Close, Mildenhall, Suffolk, IP28 7FF

Rent - £1,100 PCM Deposit - £1,269

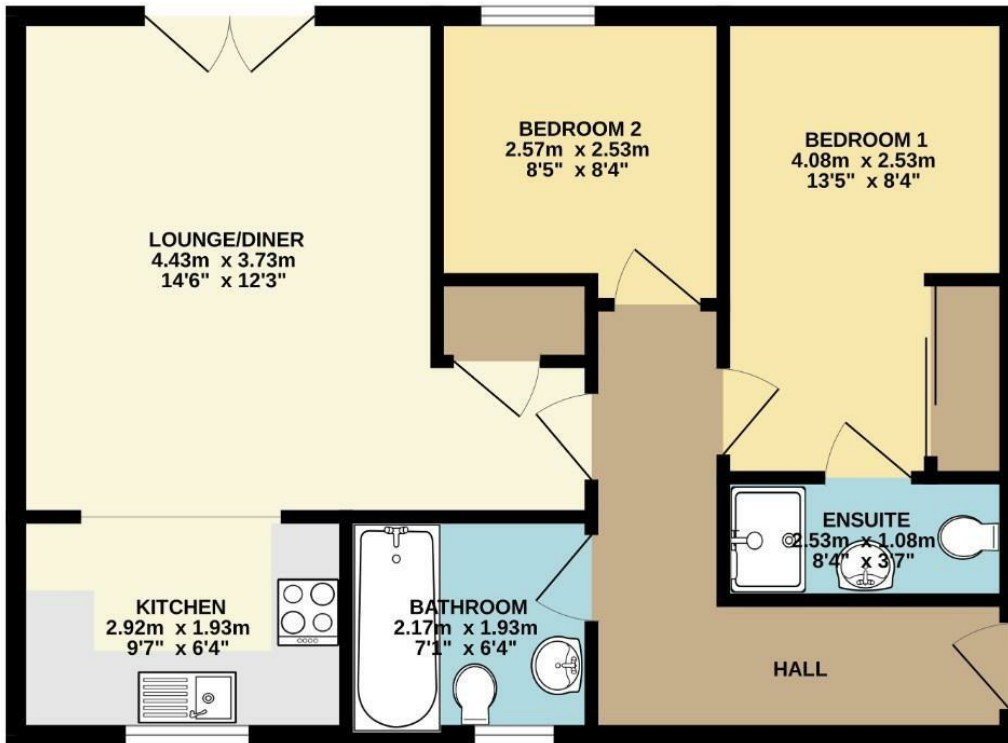
** USAF Housing Inspection PASSED ** Shires Residential are delighted to offer this two bedroom ground floor flat situated in a popular area of Mildenhall. The property consists of lounge, modern kitchen, conservatory, two bedrooms, en-suite and family bathroom. There are also two allocated parking spaces available. The property is offered unfurnished and is available early February.

- GROUND FLOOR FLAT
- WITHIN WALKING DISTANCE TO TOWN CENTRE
- OPEN PLAN LIVING
- EN-SUITE BATHROOM
- TWO ALLOCATED PARKING SPACES
- TWO GOOD SIZED BEDROOMS
- GAS HEATING & ENERGY RATING - B
- APPROXIMATE SIZE - 635 SQ FT
- SORRY NO PETS/ COUNCIL TAX BAND - B
- CALL SHIRES TO VIEW



Council Tax Band: B - EPC Rating: B 82

GROUND FLOOR
55.8 sq.m. (601 sq.ft.) approx.



TOTAL FLOOR AREA : 55.8 sq.m. (601 sq.ft.) approx.

Whilst every attempt has been made to ensure the accuracy of the floorplan contained here, measurements of doors, windows, rooms and any other items are approximate and no responsibility is taken for any error, omission or mis-statement. This plan is for illustrative purposes only and should be used as such by any prospective purchaser. The services, systems and appliances shown have not been tested and no guarantee as to their operability or efficiency can be given.
Made with Metropix 5/2005.

